



**Waxman Ceramics**



# EXADECK

Tile Decking System



# WHAT IS EXADECK?

**EXADECK** is a flooring system formed by quick-installation ceramic slats placed onto strips with fixed or concealed brackets.

The assembling is very easy and removable and does not require specific tools. As a raised flooring, it facilitates all the installations in the lower part in a simple and comfortable way, with all the advantages of its floating support system as the individual opening of every slat in order to access to the lower part if needed.

It is a ceramic material specially designed for outdoors, where environmental conditions are not an obstacle for installation, as with other types of materials such as wood, resin or plastic. It offers durability and resistance to abrupt thermal variations and stains. It is suitable for residential, commercial and high-traffic areas due to its high technical characteristics such as anti-slip properties even in wet conditions, mechanical strength and abrasion resistance.

## ADVANTAGES



**Outside use** Thanks to its resistance to extreme weather conditions, it makes it an ideal product for outdoor installations, in environments where humidity is an obstacle for wood, resins, plastics and other types of materials.



**System suitable for residential or commercial areas (high traffic)** The Exadeck recordable system is suitable for use in high traffic areas, due to its high resistance to abrasion and its high technical characteristics.



**Easy Installation** The installation of the Exadeck parts is done through a customized system of clicks to achieve a quick and agile placement.



**Frost resistance** Due to its almost no water absorption, Exadeck is a product resistant to frost.



**Anti-slip properties** Extruded ceramic material with a high degree of anti-slip. Class 3 Classification.



**High mechanical strength and abrasion** Product with very high values of breaking strength and a very high resistance to surface abrasion.



**High resistance to stains** Its high resistance against stains, makes it an easy-to-clean exterior product.

## AREAS OF USE



**Residential and private areas** Exadeck is the ideal pavement for outdoor spaces, such as patios, terraces, swimming pools, porches, gardens.



**Public areas** Leisure areas, passage areas and pedestrian paths in gardens, parks, beaches and terraces, capable of integrating with originality in any landscape context for its high resistance to humidity and high temperatures.



**Commercial areas and high traffic** Exadeck extruded stoneware is suitable for high traffic areas such as hotels, restaurants, hospitality and contract channel, for its great resistance to stains and abrasion, its durability and low porosity.



**Pool surrounds** Our product offers the possibility of creating walkways between beaches, swimming pools and lake environments, due to its high slip resistance.



ExaDeck - Natural 15x120cm

## COMPONENTS

These are the basic ExaDeck system components for an installation on a previously prepared and resistant surface:



**Rastrel PVC Quick Fix**  
2300x45x27mm

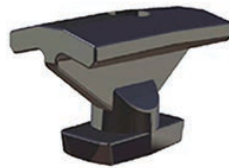


27mm

45mm



**Grapa Quick Fix Terminal**  
200x85x15mm



**Grapa Quick Fix Intermedia**



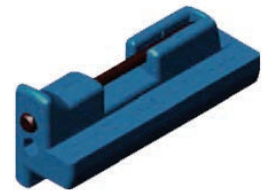
**Grapa Quick Fix Pro Intermedia**



**Stainless Screw with Taco**  
6x60mm  
Ø8mm



**Bit 1/4 for Ctool**  
4mm  
Colour: Steel



**Ctool**  
Colour: Blue



**Closure Cover**  
2300x46x8mm  
Colours: Black, Grey, Brown

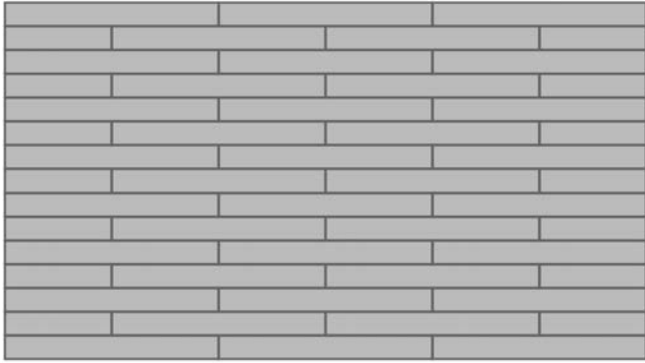


8mm

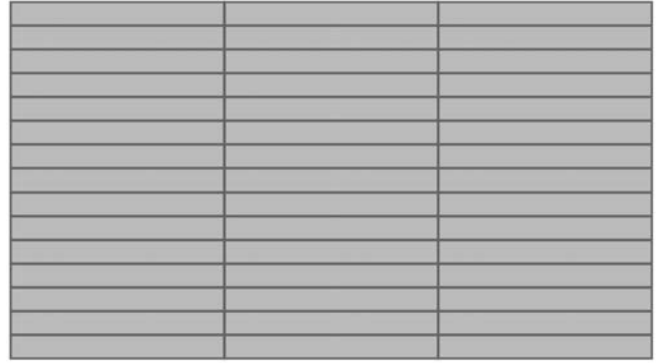
46mm

# TYPES OF PLACEMENT

Pieces per m<sup>2</sup> (including installation board) = 5.55 units of whole plank.



Locked



Aligned





ExaDeck - Oak 15x120cm

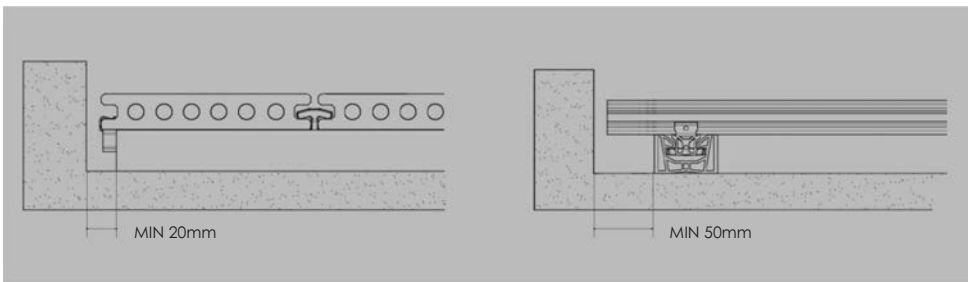
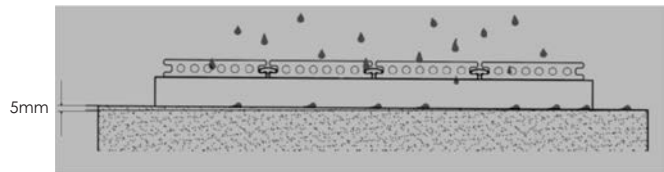
# INSTALLATION

PVC battens are not structural profiles, so they should not be installed as elevated constructions and always supported on a solid surface along their entire length. Must be installed in such a way that the **accumulation of water is prevented**, so that a water evacuation path will always be favored.

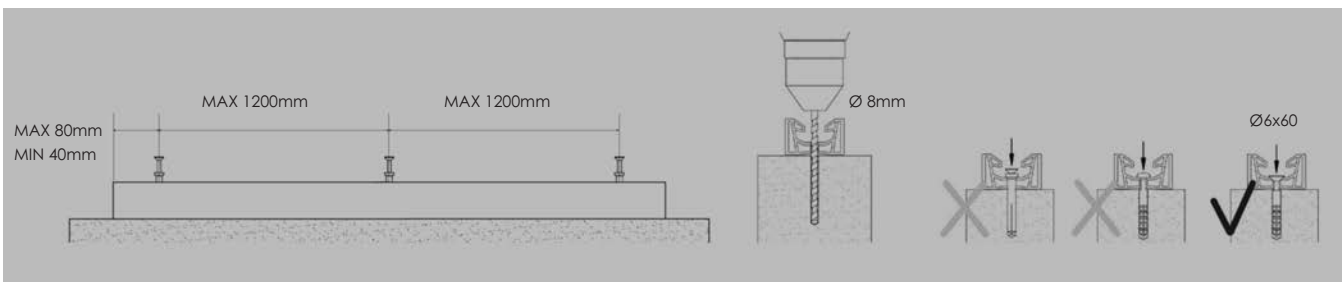
The **EXADECK** product range is intended for use in exclusively pedestrian areas.

For any installation need that is not included in this manual, contact us to receive additional instructions.

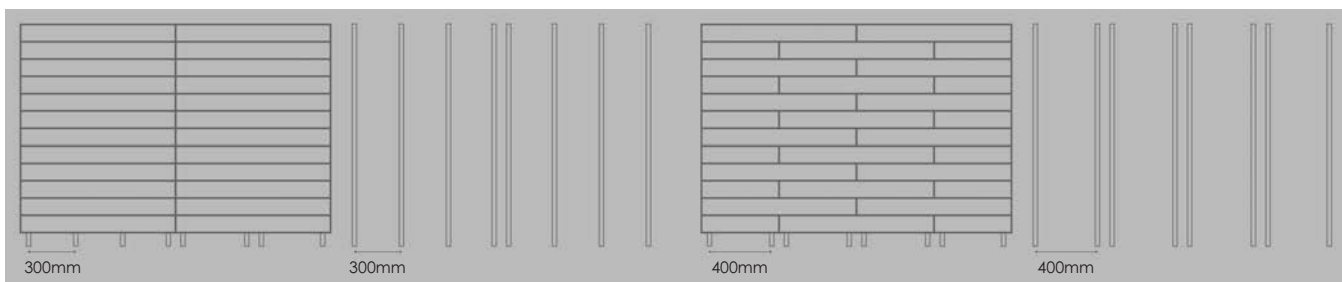
The installation surface must be completely stable, it must have an inclination for **water runoff** of at least 5mm for each linear meter (0.5%) in the direction of the battens.



Perimeter distances

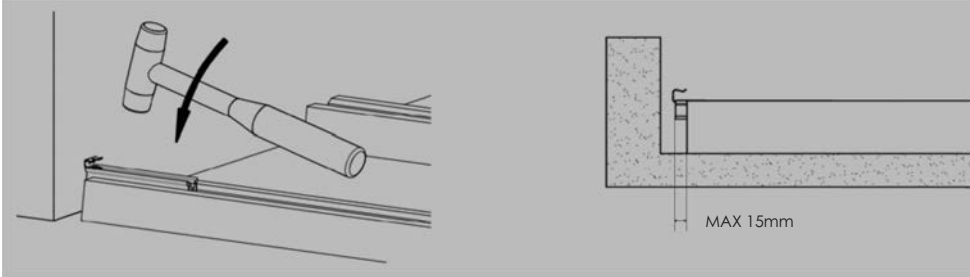


**STEP 1.** Fixing the rastrel profiles to the substrate

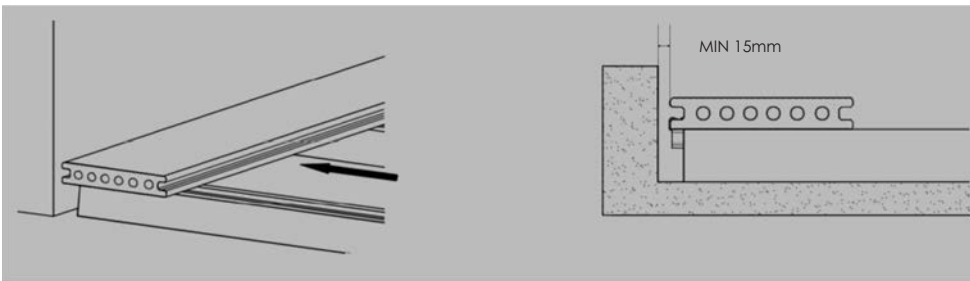


The ExaDeck pieces can not, under any circumstances, be supported by less than 4 battens

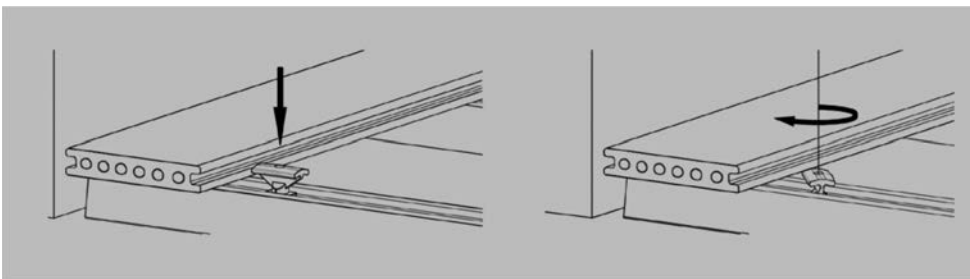
# INSTALLATION



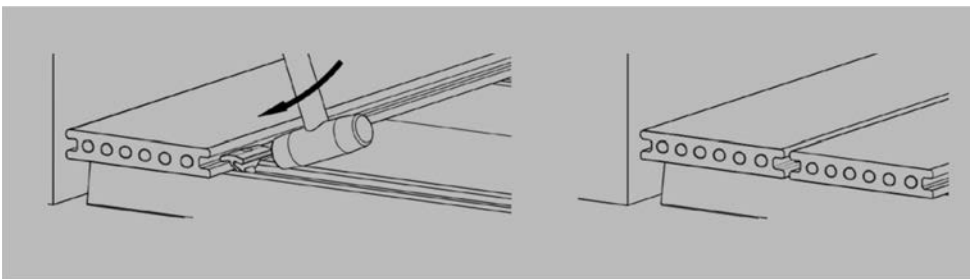
STEP 2. Attach the Grapa quick fix terminals



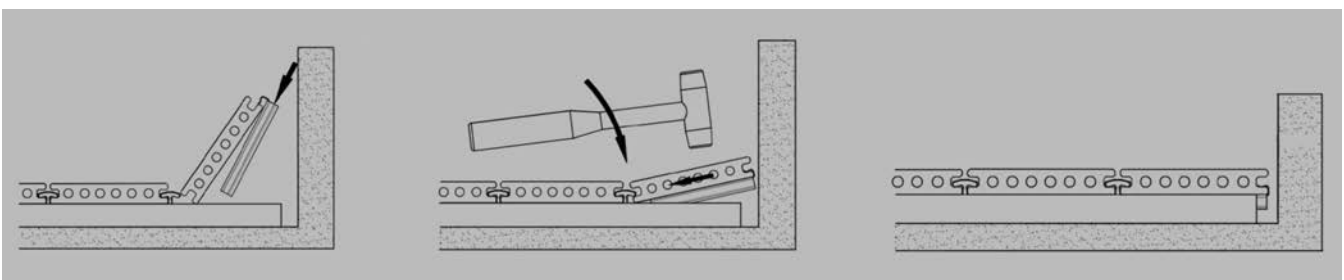
STEP 3. Placement of the tile



STEP 4. Fixing grapa fix intermedia



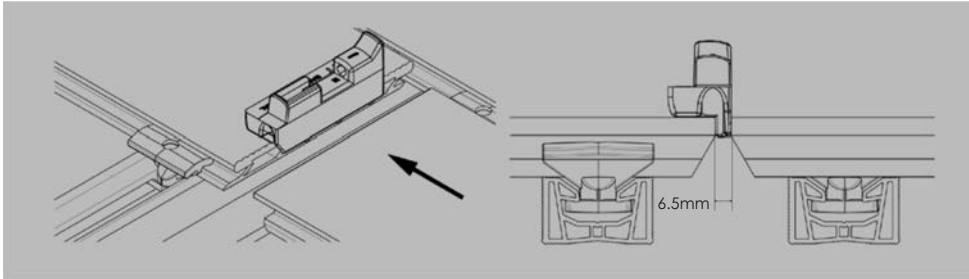
STEP 5. Fixing grapa fix intermedia and placement of the next tile



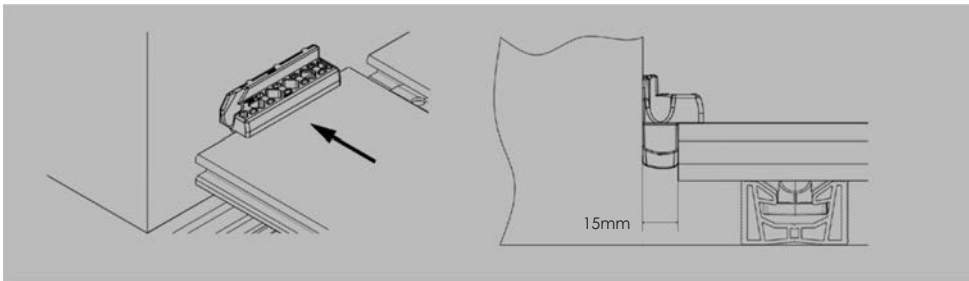
STEP 6. Placement of final tile with Grapa quick fix terminal



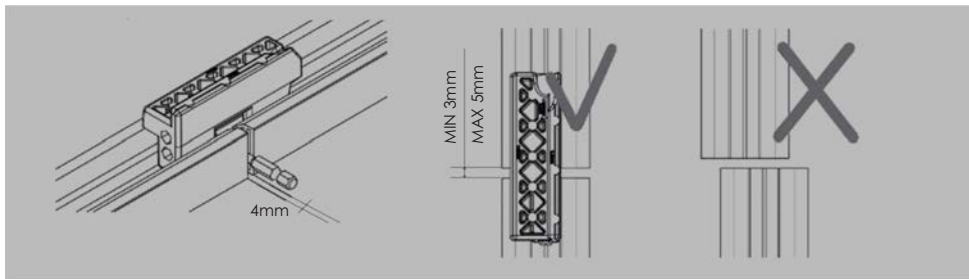
## USE OF THE CTOOL



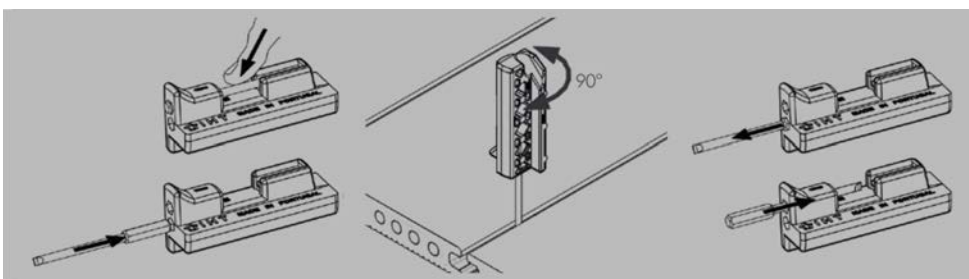
Space between the pieces



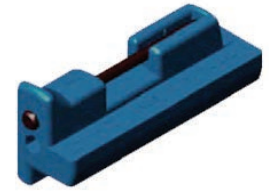
Clearance to fixed elements



Alignment of the battens



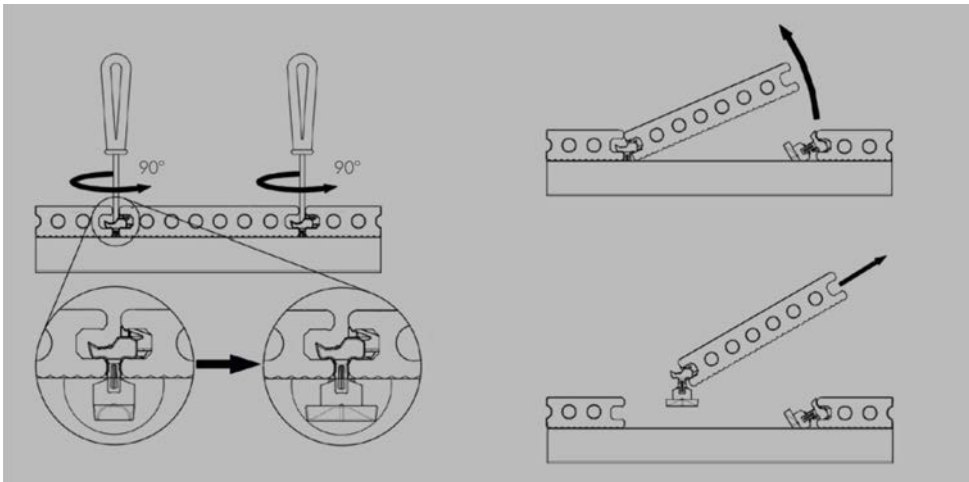
Opening and closing of the quick-fix pro intermediate clamp



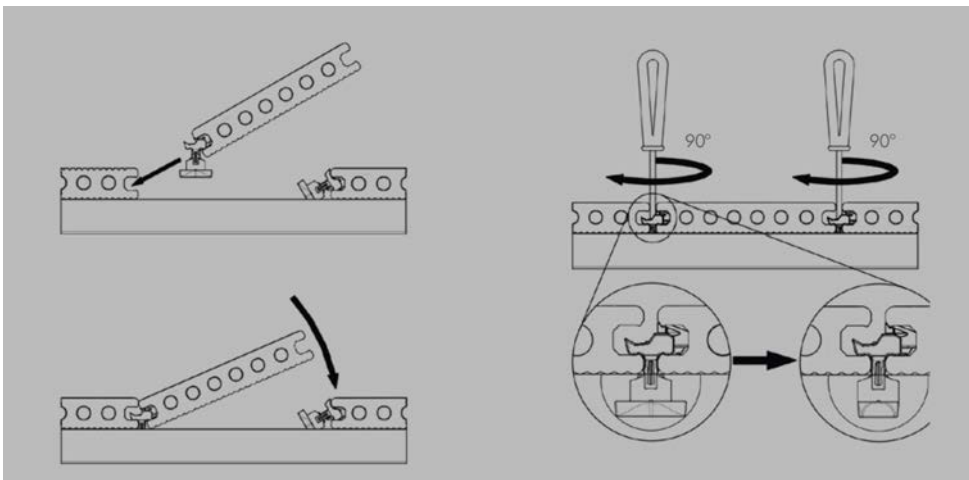
Ctool

# REMOVAL AND REFITTING TILES

Uninstallation and reinstallation of parts with grip quick fix pro intermedia



Individual opening of the piece



Re-installation of the open piece





ExaDeck - Maple 15x120cm

# COLOURS



Oak  
15x120cm



Natural  
15x120cm



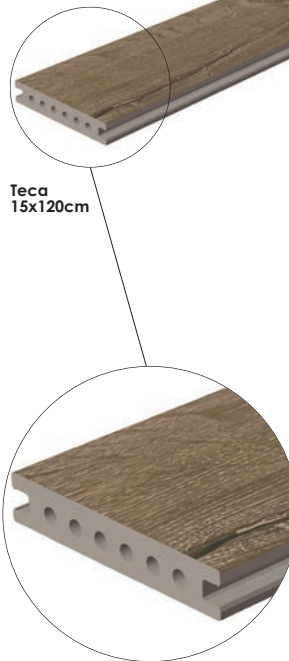
Maple  
15x120cm



Teca  
15x120cm



Antico  
15x120cm



Close-up

Slip Resistance		
	R11	+36
	C	

Thickness





ExaDeck - Teca 15x120cm



ExaDeck - Antico 15x120cm

# Waxman Ceramics

---

**Head Office**                      **01422 311331**

Grove Mills  
Elland  
West Yorkshire  
HX5 9DZ  
England

Email            [info@waxmanceramics.co.uk](mailto:info@waxmanceramics.co.uk)  
Web              [www.waxmanceramics.co.uk](http://www.waxmanceramics.co.uk)

**Waxman Ceramics Ltd - Part of the Waxman Group**

The information contained within this document is, to the best of our knowledge, accurate at the time of production.  
We reserve the right to modify this document at any time.  
Whilst every attempt has been made to accurately reproduce colours and textures, images used within this document are only intended as a guide.  
Please refer to actual product samples before specifying or ordering.

REF: 20/02