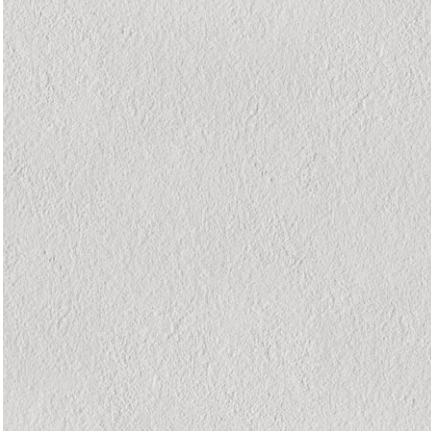




**CM** **series** **CEMENT**  
porcelain stoneware  
UNI EN14411  
group B1a GL



COLOURS



CM-30  
White



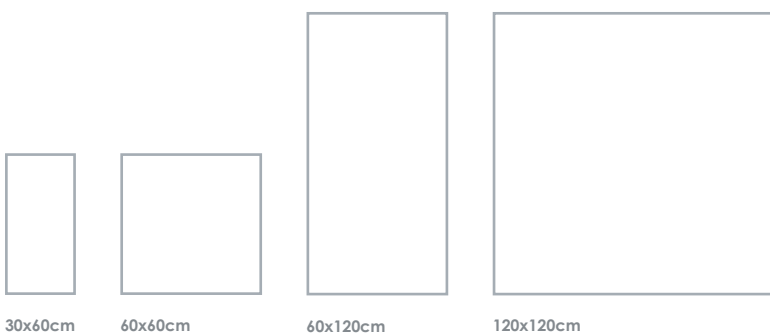
CM-31  
Almond



CM-32  
Beige



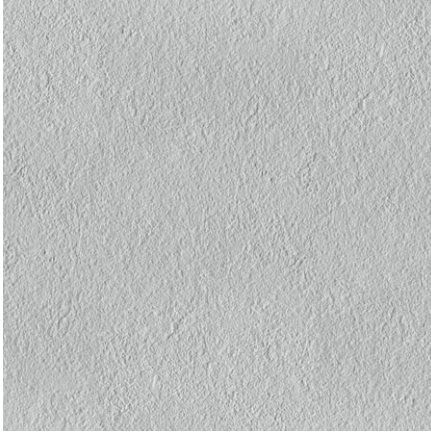
CM-33  
Brun



Thickness



COLOURS



CM-34  
Pale Grey



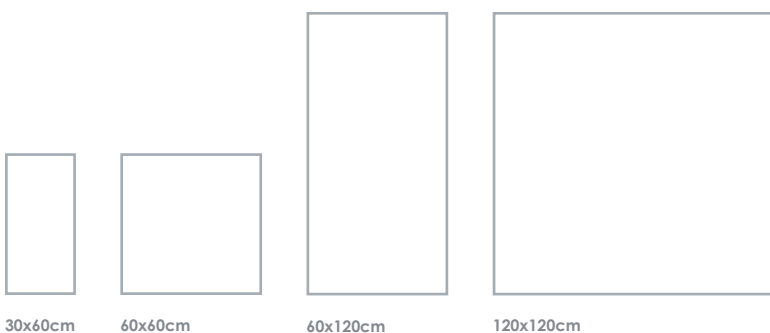
CM-35  
Grey



CM-36  
Anthracite



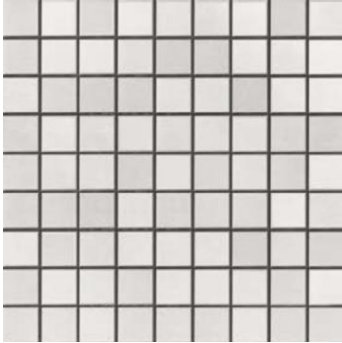
CM-37  
Midnight



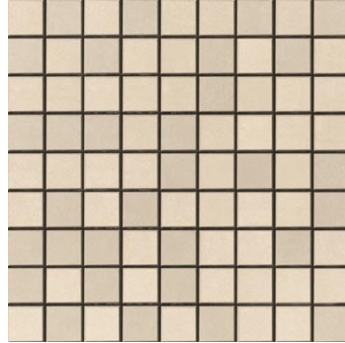
Thickness



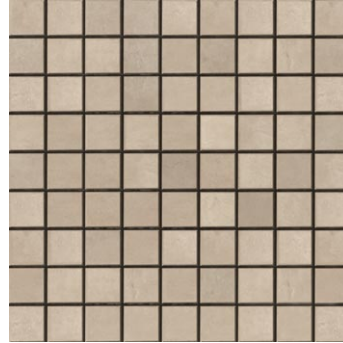
MOSAIC



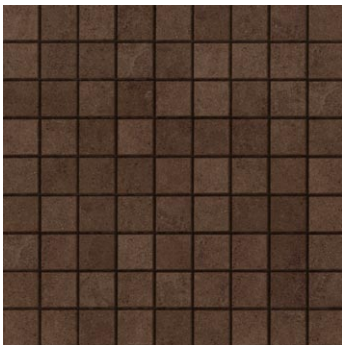
CM-30 White Mosaic  
30x30cm



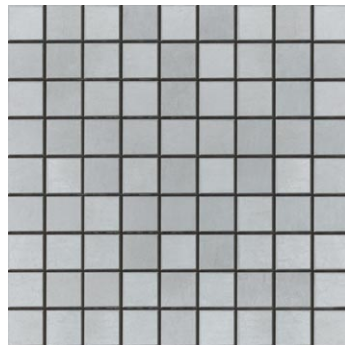
CM-31 Almond Mosaic  
30x30cm



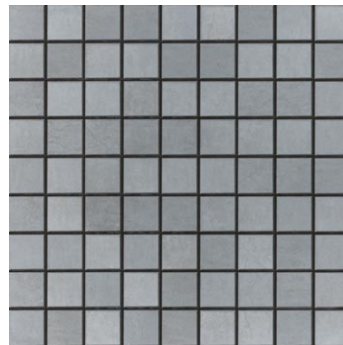
CM-32 Beige Mosaic  
30x30cm



CM-33 Brun Mosaic  
30x30cm



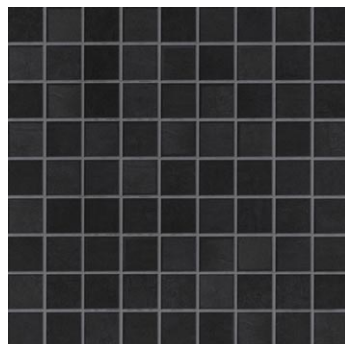
CM-34 Pale Grey Mosaic  
30x30cm



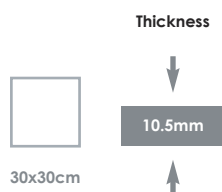
CM-35 Grey Mosaic  
30x30cm



CM-36 Anthracite Mosaic  
30x30cm

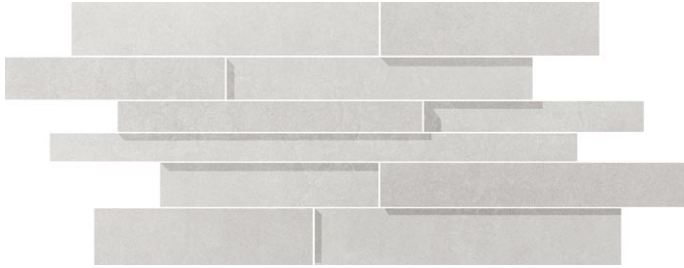


CM-37 Midnight Mosaic  
30x30cm



Available in Natural and Polished finish

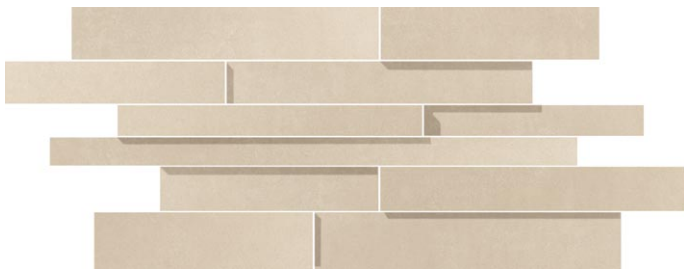
MOSAIC



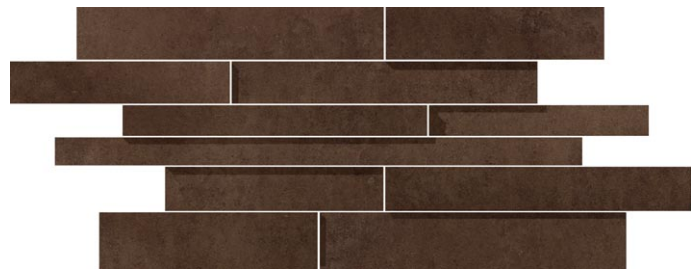
CM-30 White Brick  
30x60cm



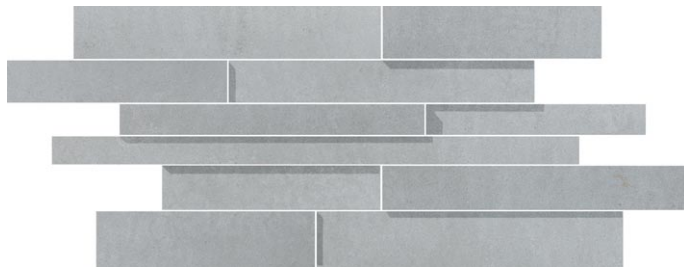
CM-31 Almond Brick  
30x60cm



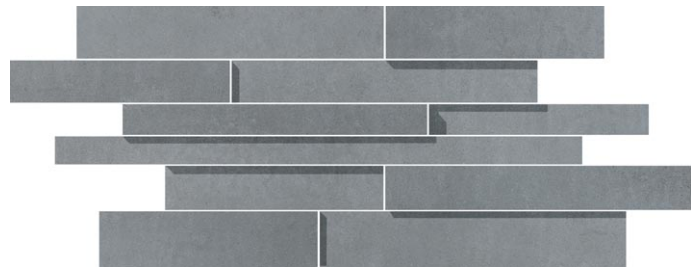
CM-32 Beige Brick  
30x60cm



CM-33 Brun Brick  
30x60cm



CM-34 Pale Grey Brick  
30x60cm



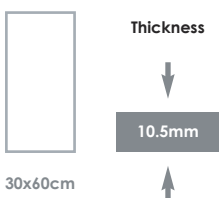
CM-35 Grey Brick  
30x60cm



CM-36 Anthracite Brick  
30x60cm

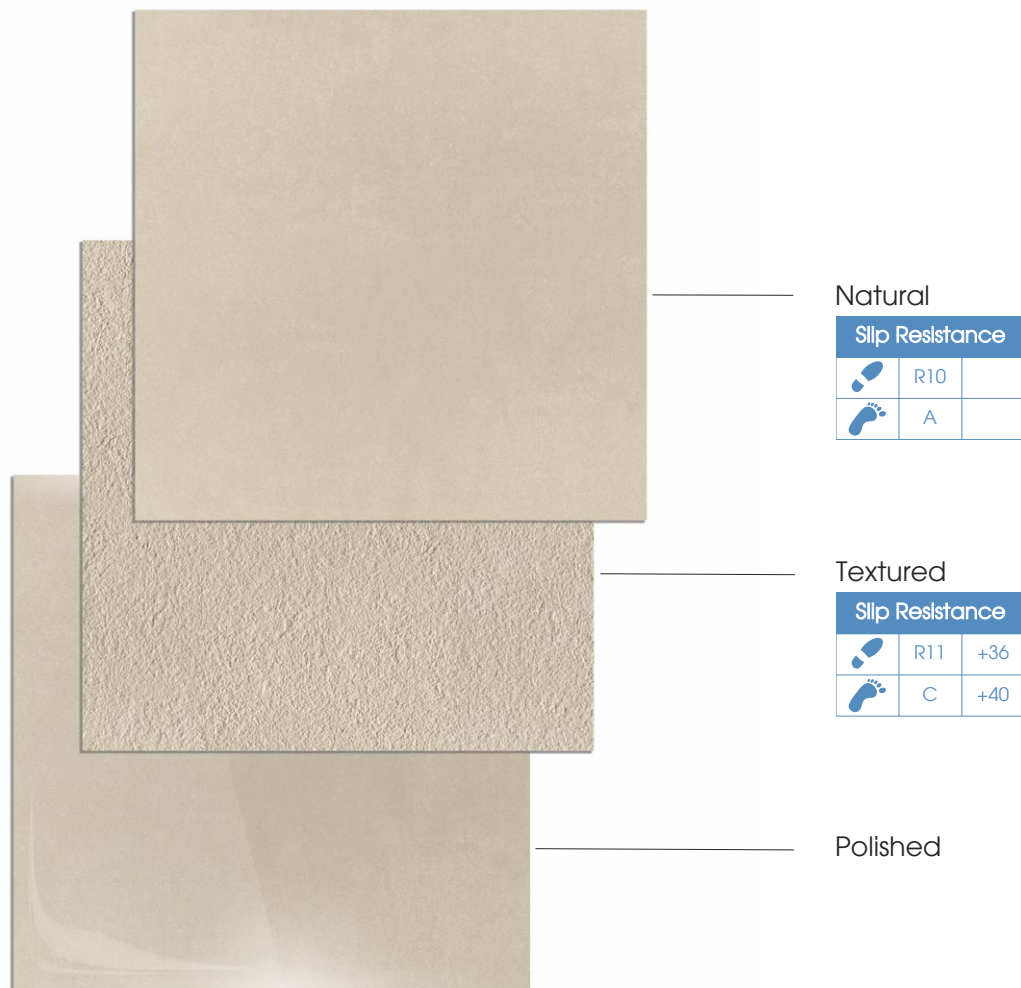


CM-37 Midnight Brick  
30x60cm



Available in Natural finish only

# FINISHES



Natural

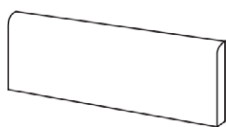
Slip Resistance		
	R10	
	A	

Textured

Slip Resistance		
	R11	+36
	C	+40

Polished

# SPECIAL PIECES



Skirting  
9.5x60cm



Stair Tread  
32.5x120cm

SIZES



SIZE		30x60cm Rectified	60x60cm Rectified	60x120cm Rectified	120x120cm Rectified
THICKNESS		10.5mm	10.5mm	10.5mm	10.5mm
CM-30	White	● ● ●	● ● ●	● ●	● ●
CM-31	Almond	● ● ●	● ● ●	● ●	● ●
CM-32	Beige	● ● ●	● ● ●	● ●	● ●
CM-33	Brun	● ● ●	● ● ●	● ●	● ●
CM-34	Pale Grey	● ● ●	● ● ●	● ●	● ●
CM-35	Grey	● ● ●	● ● ●	● ●	● ●
CM-36	Anthracite	● ● ●	● ● ●	● ●	● ●
CM-37	Midnight	● ● ●	● ● ●	● ●	● ●

● Natural ● Textured ● Polished



CM-30 White Polished - 60x120cm





CM-32 Beige Natural - 60x120cm / CM-32 Beige Mosaic Polished - 30x30cm



Serie 7 "White"

Serie 7 "Teal"

Serie 7 "Petrol Blue"



CM-33 Brun Natural - 120x120cm / CM-35 Grey Polished - 60x120cm





CM-36 Anthracite Brick - 30x60cm



CM-36 Anthracite Polished - 60x120cm

# TECHNICAL FEATURES

	Norm Standards	Test results
 Product Classification	UNI EN 14411-G ISO 13006	Group B1a GL fully vitrified
 Dimensional and surface quality	UNI EN ISO 10545-2	Conforms
 Water absorption	UNI EN ISO 10545-3	0.1%
 Flexural strength	UNI EN ISO 10545-4	45N/mm <sup>2</sup>
 Frost resistance	UNI EN ISO 10545-12	Resistant
 Resistance to acids and alkalis (except hydrofluoric acid)	UNI EN ISO 10545-13	Min GB
 Deep abrasion resistance	UNI EN ISO 10545-6	140mm <sup>3</sup>
 Linear thermal expansion	UNI EN ISO 10545-8	≤ 7x10 <sup>-6</sup> °C <sup>-1</sup>
 Stain resistance	UNI EN ISO 10545-14	Min 3
 Slip resistance	DIN 51130	R10 (Natural) R11 (Textured)
	DIN 51097	A (Natural) B + C (Textured)
	PTV (shod)	+36 (Natural) +36 (Textured)
	PTV (barefoot)	+40 (Textured)
 Light fastness	DIN 51094	Conforms

# Waxman Ceramics Architectural Tiles

---

**Head Office**                      **01422 377123**

Grove Mills  
Elland  
West Yorkshire  
HX5 9DZ  
England

Email            [info@waxmanarchitectural.co.uk](mailto:info@waxmanarchitectural.co.uk)  
Web              [www.waxmanarchitectural.co.uk](http://www.waxmanarchitectural.co.uk)

**Waxman Ceramics Architectural Tiles is a division of Waxman Ceramics Ltd - Part of the Waxman Group**

The information contained within this document is, to the best of our knowledge, accurate at the time of production.  
We reserve the right to modify this document at any time.  
Whilst every attempt has been made to accurately reproduce colours and textures, images used within this document are only intended as a guide.  
Please refer to actual product samples before specifying or ordering.

REF: 24/01