



NY **series** **NEW YORK**
Porcelain Stoneware
UNI EN14411
Annexe G Group B1a

EPD 



NY Series

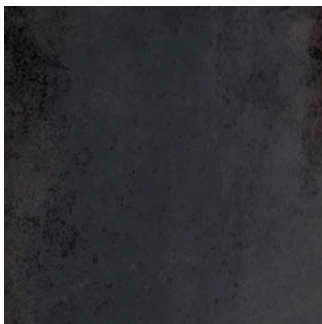
Porcelain Stoneware

NEW YORK

COLOURS



NY-100 Azzurro



NY-101 Coal



NY-102 Copper



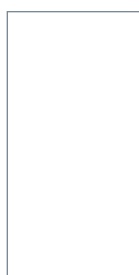
NY-103 Grey



NY-104 Mint



NY-105 Pearl

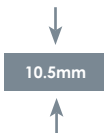


60x120cm Rectified



60x60cm Rectified

Thickness



NY Series

Porcelain Stoneware

NEW YORK

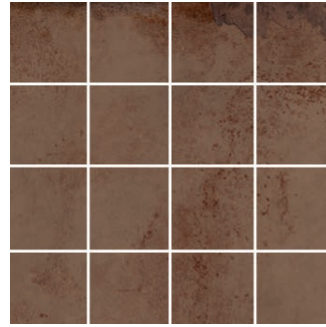
MOSAIC



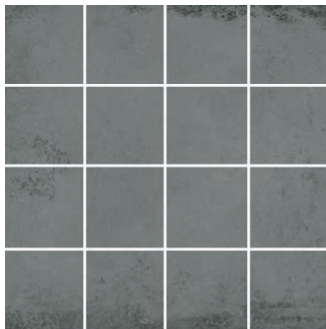
NY-100 Azzurro 7cm Mosaic



NY-101 Coal 7cm Mosaic



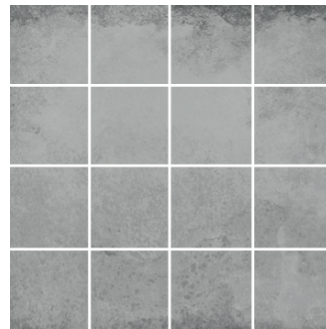
NY-102 Copper 7cm Mosaic



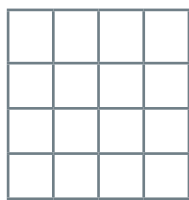
NY-103 Grey 7cm Mosaic



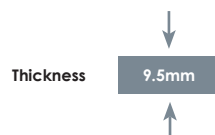
NY-104 Mint 7cm Mosaic



NY-105 Pearl 7cm Mosaic



7cm Mosaic
30x30cm



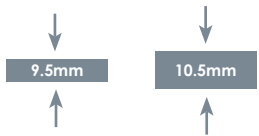
NY Series

Porcelain Stoneware

NEW YORK

FORMATS

Thickness



SIZE	60x120cm Rectified	60x60cm Rectified	7cm Mosaic 30x30cm
Thickness	10.5mm	9.5mm	9.5mm
NY-100 Azzurro	○ ○	○ ○	○ ○
NY-101 Coal	○ ○	○ ○	○ ○
NY-102 Copper	○ ○	○ ○	○ ○
NY-103 Grey	○ ○	○ ○	○ ○
NY-104 Mint	○ ○	○ ○	○ ○
NY-105 Pearl	○ ○	○ ○	○ ○

○ Matt ○ Semi Polished

FINISHES



Matt

Slip Resistance		
	R10	+36
	B	

Semi Polished



NY-100 Azzurro - 60x120cm



NY-102 Copper - 60x120cm / 60x60cm



NY-104 Mint - 60x120cm / 7cm Mosaic



NY-104 Mint - 60x120cm / 60x60cm













NY-103 Grey - 60x60cm



NY-103 Grey - 120x60cm / 60x60cm

TECHNICAL FEATURES

		Norm Standards		Test Results
	Product Classification	UNI EN 14411		Annexe G Group B1a
	Dimensional and surface quality	UNI EN ISO 10545-2		Complies with Standards
	Water absorption	UNE-EN-ISO 10545-3		< 0,5%
	Modulus of Rupture	UNI EN ISO 10545-4		1600-2400 N
	Resistance to Deep abrasion	UNE-EN-ISO 10545-6		<130mm ³
	Chemical Resistance	UNI EN ISO 10545-13	Ammonium chloride 100 G/L Sodium Hypochlorite 20 MG/L Hydrochloric Acid 3% Citric Acid 100 G/L Potassium Hydroxyde 30 G/L	A A Complies with standards Complies with standards Complies with standards
	Shock resistance	UNI EN ISO 10545-5		Resistant
	Linear thermal expansion	UNI EN ISO 10545-8		<7,0 x 10 ⁻⁶ °C ⁻¹
	Stain resistance	UNI EN ISO 10545-14		Class 5
	Slip Resistance	DIN 51130 DIN 51097 PTV Pendulum Test Value (Wet)		Matt R10 Matt B Matt +36

Waxman Ceramics Architectural Tiles

Head Office **01422 377123**

Grove Mills
Elland
West Yorkshire
HX5 9DZ
England

Email info@waxmanarchitectural.co.uk
Web www.waxmanarchitectural.co.uk

Waxman Ceramics Architectural Tiles is a division of Waxman Ceramics Ltd - Part of the Waxman Group

The information contained within this document is, to the best of our knowledge, accurate at the time of production. We reserve the right to modify this document at any time. Whilst every attempt has been made to accurately reproduce colours and textures, images used within this document are only intended as a guide. Please refer to actual product samples before specifying or ordering.