



# Waxman Ceramics



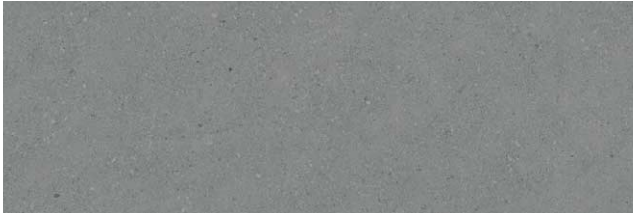
# GRANITE

Glazed Ceramic Wall Tiles  
Glazed Porcelain Floor Tiles

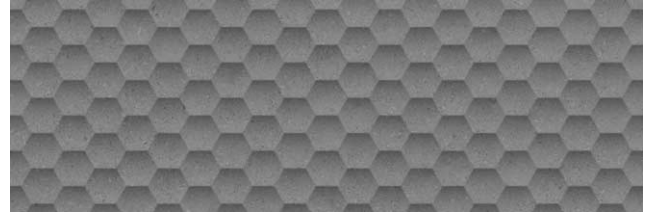


## COLOURS

---



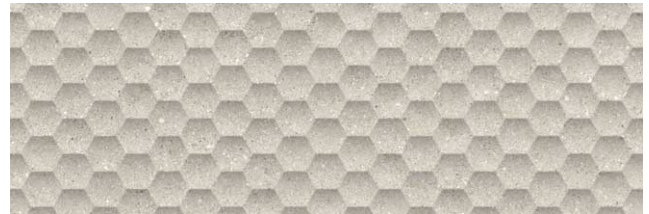
**Antracite**  
30x90cm Rectified



**Antracite Eden Decor**  
30x90cm Rectified



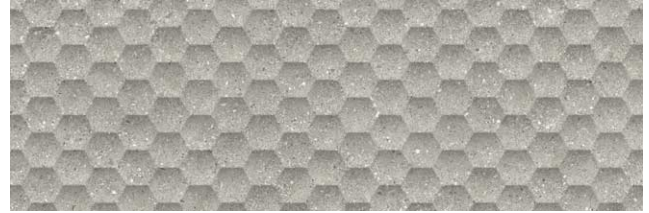
**Cream**  
30x90cm Rectified



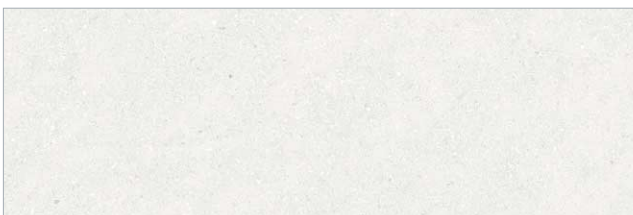
**Cream Eden Decor**  
30x90cm Rectified



**Grey**  
30x90cm Rectified



**Grey Eden Decor**  
30x90cm Rectified

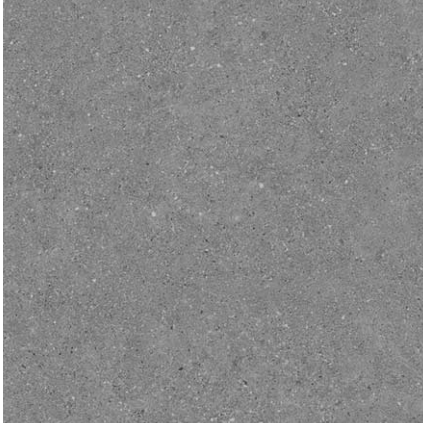


**White**  
30x90cm Rectified



**White Eden Decor**  
30x90cm Rectified

## COLOURS



Antracite  
60x60cm

3 A



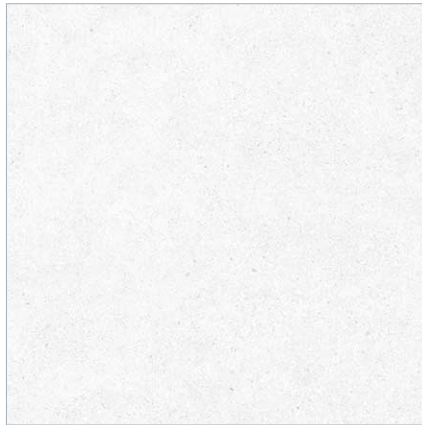
Cream  
60x60cm

4 A



Grey  
60x60cm

3 A



White  
60x60cm

4 A

A = Anti-Slip

Slip Resistance		
	R9	+36
		



Anthracite - 60x60cm / Grey - 30x90cm / Grey Eden Decor - 30x90cm



Grey - 30x90cm



White - 30x90cm

# SPECIFICATION & PACKING

## Glazed Ceramic Wall Tiles - Rectified

Suitability	Thickness	Walls		Floors		Frostproof	Colour Variation
		Internal	External	Internal	External		
30x90cm	10.5mm	✓				No	V2

Packing	Pcs / ctn	M <sup>2</sup> / Ctn	Kg / Ctn	Ctns / Pallet	M <sup>2</sup> / Pallet
30x90cm	5	1.35	25.66	63	85.05
30x90cm Eden Decor	4	1.08	20.53	63	68.04

## Glazed Porcelain Floor Tiles

Suitability	Thickness	Walls		Floors		Frostproof	Colour Variation
		Internal	External	Internal	External		
60x60cm	8.5mm	✓	✓	✓		Yes	V2

Packing	Pcs / ctn	M <sup>2</sup> / Ctn	Kg / Ctn	Ctns / Pallet	M <sup>2</sup> / Pallet
60x60cm	4	1.44	29.53	32	46.08

# Waxman Ceramics

---

**Head Office**                      **01422 311331**

Grove Mills  
Elland  
West Yorkshire  
HX5 9DZ  
England

Email            [info@waxmanceramics.co.uk](mailto:info@waxmanceramics.co.uk)  
Web              [www.waxmanceramics.co.uk](http://www.waxmanceramics.co.uk)

**Waxman Ceramics Ltd - Part of the Waxman Group**

The information contained within this document is, to the best of our knowledge, accurate at the time of production.  
We reserve the right to modify this document at any time.  
Whilst every attempt has been made to accurately reproduce colours and textures, images used within this document are only intended as a guide.  
Please refer to actual product samples before specifying or ordering.

REF: 22/09