



Waxman Ceramics



IONIC

Glazed Porcelain Tiles



COLOURS



White
30x120cm Rectified



Sand
30x120cm Rectified



Steel
30x120cm Rectified



Copper
30x120cm Rectified



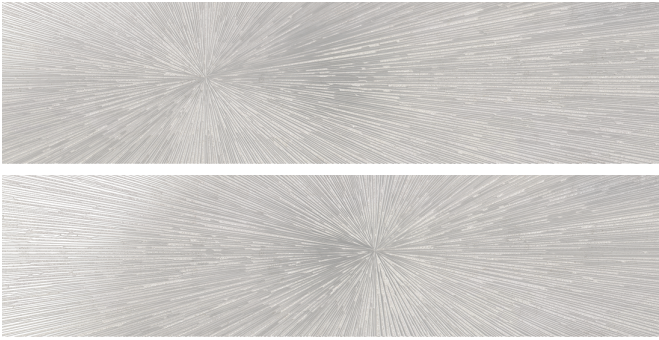
Thickness



A = Anti-Slip

Slip Resistance	
	R9

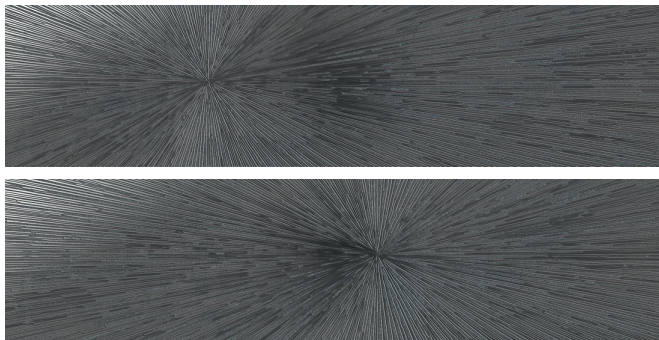
DECORS



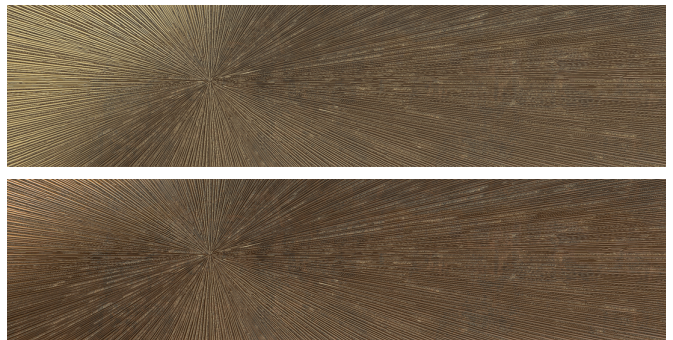
White Impact Décor (Set of 2)
30x120cm Rectified



Sand Impact Décor (Set of 2)
30x120cm Rectified



Steel Impact Décor (Set of 2)
30x120cm Rectified



Copper Impact Décor (Set of 2)
30x120cm Rectified

Thickness



11mm



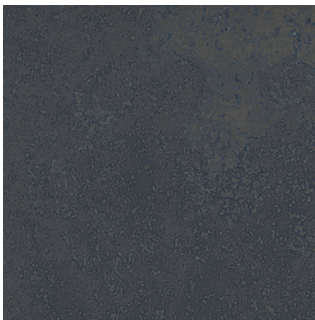
COLOURS



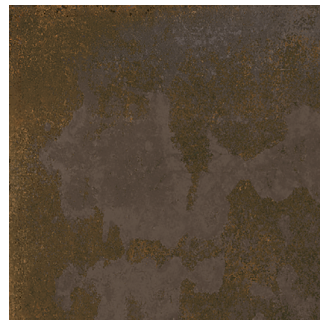
White
60x60cm Rectified



Sand
60x60cm Rectified



Steel
60x60cm Rectified



Copper
60x60cm Rectified



Thickness



A = Anti-Slip

Slip Resistance	
	R9



Steel - 30x120cm Rectified / Steel Décor A - 30x120cm Rectified

SPECIFICATION & PACKING

Glazed Porcelain Tiles - Rectified

Suitability	Thickness	Walls		Floors		Frostproof	Colour Variation
		Internal	External	Internal	External		
30x120cm	11mm	✓	✓	✓		Yes	V2
30x120cm Impact Décor	11mm	✓	✓			Yes	V2
60x60cm	11mm	✓	✓	✓		Yes	V2

Packing	Pcs / ctn	M ² / Ctn	Kg / Ctn	Ctns / Pallet	M ² / Pallet
30x120cm	3	1.08	28.00	36	38.88
30x120cm Impact Décor	2	0.72	18	30	21.6
60x60cm	4	1.39	28.00	32	44.48

Waxman Ceramics

Head Office **01422 311331**

Grove Mills
Elland
West Yorkshire
HX5 9DZ
England

Email info@waxmanceramics.co.uk
Web www.waxmanceramics.co.uk

Waxman Ceramics Ltd - Part of the Waxman Group

The information contained within this document is, to the best of our knowledge, accurate at the time of production.
We reserve the right to modify this document at any time.
Whilst every attempt has been made to accurately reproduce colours and textures, images used within this document are only intended as a guide.
Please refer to actual product samples before specifying or ordering.

REF: 20/11