



Waxman Ceramics



TIAD

Glazed Ceramic
EN14411 Annexe L - BIII

EPD 



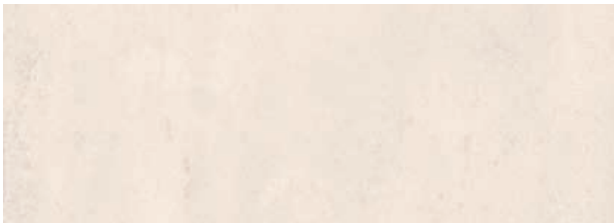
COLOURS



Perla
25x70cm



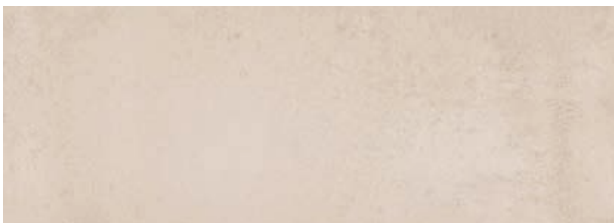
Perla Decor
25x70cm



Neutro
25x70cm



Neutro Decor
25x70cm



Arena
25x70cm



Arena Decor
25x70cm





Arena & Arena Decor 25x70cm



Perla & Perla Decor 25x70cm



Neutro & Neutro Decor 25x70cm



Perla & Perla Decor 25x70cm

SPECIFICATION AND PACKING

Suitability	Thickness	Walls		Floors		Frostproof	Colour Variation
		Internal	External	Internal	External		
25x70cm	8.5mm	✓				No	V2
25x70cm Decor	8.5mm	✓				No	V4

Packing	Pcs / ctn	M ² / Ctn	Kg / Ctn	n Ctns / Pallet	M ² / Pallet
25x70cm	9	1.58	24.64	64	101.12

Waxman Ceramics

Head Office **01422 311331**

Grove Mills
Elland
West Yorkshire
HX5 9DZ
England

Email info@waxmanceramics.co.uk
Web www.waxmanceramics.co.uk

Waxman Ceramics Ltd - Part of the Waxman Group

The information contained within this document is, to the best of our knowledge, accurate at the time of production. We reserve the right to modify this document at any time. Whilst every attempt has been made to accurately reproduce colours and textures, images used within this document are only intended as a guide. Please refer to actual product samples before specifying or ordering.