



Waxman Ceramics
Architectural Tiles



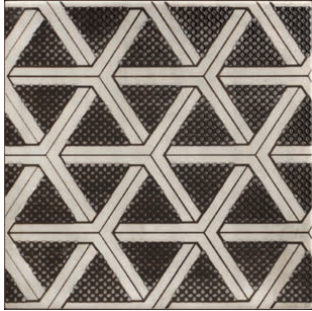
 **MURALS**

collection **ART DECO TRENDS**
Glazed Ceramic
EN14411 Annexe L
Group Bill

EPD 



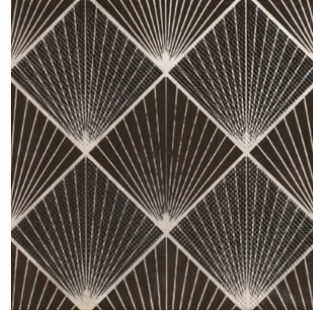
COLOURS



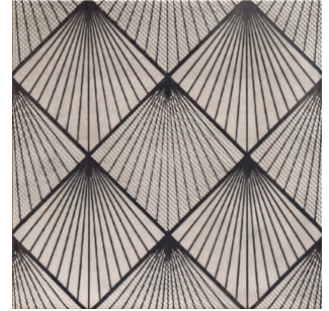
Charlestone
20x20cm



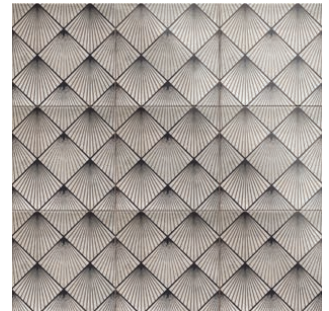
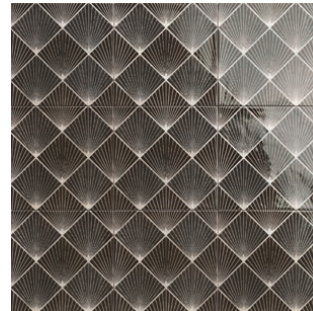
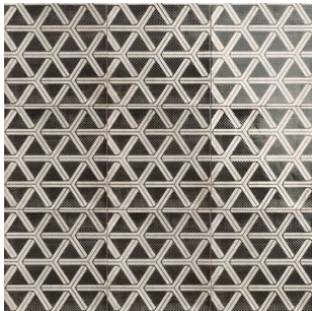
Astoria
20x20cm



Duke
20x20cm



Gatsby
20x20cm





Astoria 20x20cm








Duke 20x20cm



Gatsby 20x20cm

TECHNICAL FEATURES

		Norm Standards	Test Results
	Product Classification	UNI EN 14411	Annexe I Group BIII
	Dimensional and surface quality	UNI EN ISO 10545-2	Complies with Standards
	Breaking Strength	NI EN ISO10545-4	>600 N
	Water absorption	UNE-EN-ISO 10545-3	> 10%
	Stain resistance	UNI EN ISO 10545-14	Class 3

Waxman Ceramics Architectural Tiles

Head Office

01422 377123

Grove Mills
Elland
West Yorkshire
HX5 9DZ
England

Email info@waxmanarchitectural.co.uk

Web www.waxmanarchitectural.co.uk

Waxman Ceramics Architectural Tiles is a division of Waxman Ceramics Ltd - Part of the Waxman Group

The information contained within this document is, to the best of our knowledge, accurate at the time of production. We reserve the right to modify this document at any time. Whilst every attempt has been made to accurately reproduce colours and textures, images used within this document are only intended as a guide. Please refer to actual product samples before specifying or ordering.