



Waxman Ceramics



DISTRICT

Glazed Porcelain Tiles



COLOURS



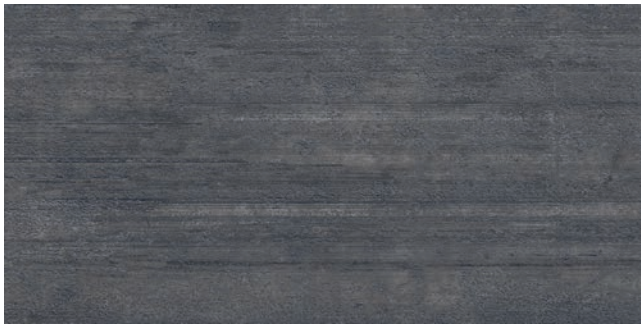
Blanco
45x90cm

4



Gris
45x90cm

3



Marengo
45x90cm

2

Slip Resistance		
	R9	



Blanco Décor
45x90cm

4



Gris Décor
45x90cm

3



Marengo Décor
45x90cm

2



Gris - 45x90cm



Blanco - 45x90cm / Marengo Décor - 45x90cm

SPECIFICATION & PACKING

Glazed Porcelain Tiles

Suitability	Thickness	Walls		Floors		Frostproof	Colour Variation
		Internal	External	Internal	External		
45x90cm	10mm	✓	✓	✓		Yes	V2

Packing	Pcs / ctn	M ² / Ctn	Kg / Ctn	Ctns / Pallet	M ² / Pallet
45x90cm	3	1.22	29.94	30	36.60

Waxman Ceramics

Head Office **01422 311331**

Grove Mills
Elland
West Yorkshire
HX5 9DZ
England

Email info@waxmanceramics.co.uk
Web www.waxmanceramics.co.uk

Waxman Ceramics Ltd - Part of the Waxman Group

The information contained within this document is, to the best of our knowledge, accurate at the time of production.
We reserve the right to modify this document at any time.
Whilst every attempt has been made to accurately reproduce colours and textures, images used within this document are only intended as a guide.
Please refer to actual product samples before specifying or ordering.

REF: 17/07