



**Waxman Ceramics**



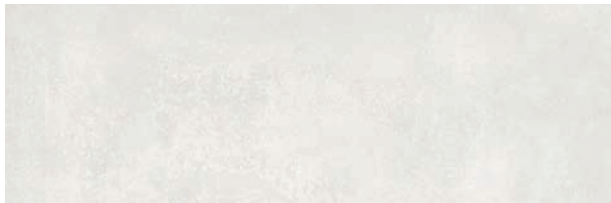
# NEUTRA

Glazed Ceramic & Glazed Porcelain Tiles

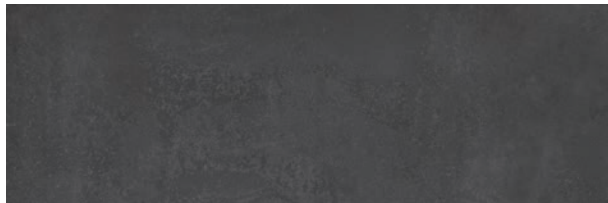


## COLOURS

---



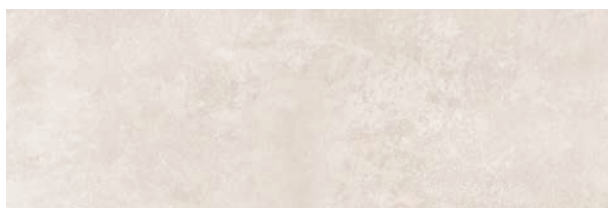
**White**  
30x90cm



**Anthracite**  
30x90cm



**Pearl**  
30x90cm



**Cream**  
30x90cm



**Pearl Relieve**  
30x90cm



**Cream Relieve**  
30x90cm

## COLOURS

---



White - Natural  
60x60cm

④



Cream - Natural  
60x60cm

④



Pearl - Natural  
60x60cm

④



Taupe - Natural  
60x60cm

③



Anthracite - Natural  
60x60cm

②





Pearl - 30x90cm / Pearl Relieve - 30x90cm / Anthracite - Natural - 60x60cm



Pearl - 30x90cm / Pearl 60x60cm





Anthracite Natural - 60x60cm

# SPECIFICATION & PACKING

## Glazed Ceramic Tiles

Suitability	Thickness	Walls		Floors		Frostproof	Colour Variation
		Internal	External	Internal	External		
30x90cm	10.5mm	✓				No	V2

Packing	Pcs / ctn	M <sup>2</sup> / Ctn	Kg / Ctn	Ctns / Pallet	M <sup>2</sup> / Pallet
30x90cm	4	1.08	20.18	60	64.8

## Glazed Porcelain Tiles

Suitability	Thickness	Walls		Floors		Frostproof	Colour Variation
		Internal	External	Internal	External		
60x60cm	10mm			✓		Yes	V2

Packing	Pcs / ctn	M <sup>2</sup> / Ctn	Kg / Ctn	Ctns / Pallet	M <sup>2</sup> / Pallet
60x60cm	4	1.44	31.86	32	46.08

# Waxman Ceramics

---

**Head Office**                      **01422 311331**

Grove Mills  
Elland  
West Yorkshire  
HX5 9DZ  
England

Email            [info@waxmanceramics.co.uk](mailto:info@waxmanceramics.co.uk)  
Web              [www.waxmanceramics.co.uk](http://www.waxmanceramics.co.uk)

**Waxman Ceramics Ltd - Part of the Waxman Group**

The information contained within this document is, to the best of our knowledge, accurate at the time of production.  
We reserve the right to modify this document at any time.  
Whilst every attempt has been made to accurately reproduce colours and textures, images used within this document are only intended as a guide.  
Please refer to actual product samples before specifying or ordering.

REF: 22/04